



Eyb Sitar Bridge 2010

In 2008 and 2009 the well known design of the Eyb Sitar bridge underwent revolutionary changes. The result is an improved handling, a better sound and the option to fit piezo pickups into the individual saddles.

1. short description

The Eyb Sitar bridge gives musicians the option to get a very authentic sitar sound out of an electric guitar. This works on guitars in "Leo F" and "Orville G"-design.

2. Versions

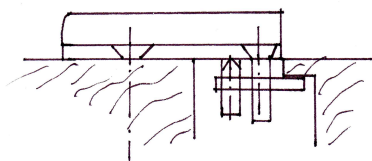
Conversion kits for 3 different types of guitars are available:

- S: Conversion kit for Stratocaster* type guitars with or without tremolo
- T: Conversion kit for Telecaster* type guitars
- P: Conversion kit for Les Paul* or SG* type guitars

3. Installation

S: Conversion kit for Stratocaster* type guitars

Remove the strings and the existing bridge or tremolo. Remove the sitar bridge saddles from the sitar bridge. Therefore the locking screws (at the front end on the left side) have to be loosened. Place the sitar bridge where the old bridge was before. For tremolo guitars use the provided wood screws and the holes under the B and A string. Install the provided clamp at the rear end from below as shown in the diagram.



For non tremolo guitars drill \varnothing 2,5 mm holes under the 4 holes for the mounting screws. Mount the sitar bridge and insert the saddles with the groove to the rear end. Restring the guitar and tune to pitch.

To get the optimum result adjust the string action first with the 2 adjustment screws at the rear end of the saddle. Then slowly raise the front end of the saddle by turning the screw at the right front end until the sitar effect is satisfying. Adjust intonation by pushing back or forth the saddles. Tighten the locking screws. The effect can be improved by adjusting the string pressure on the saddles by turning the screw in the tailpiece part of the bridge.

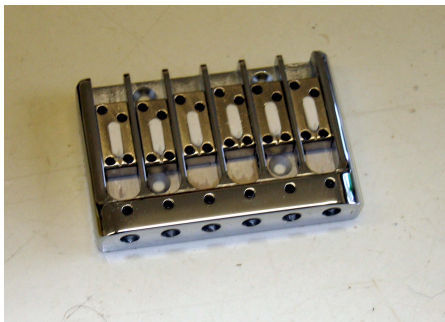
T: Conversion kit for Telecaster* type guitars

Remove strings and the bridge/pickup ring and the bridge pickup from the same. Mount the pickup in the provided pickup ring and place it where it was before and drill \varnothing 2,5 mm holes under the mounting holes of the pickup ring. Mount the pickup ring. Place the sitar bridge without the saddles (see above) right behind the pickup ring and drill \varnothing 2,5 mm holes under the holes for the mounting screws. Mount the sitar bridge and the saddles. After that proceed as explained above.

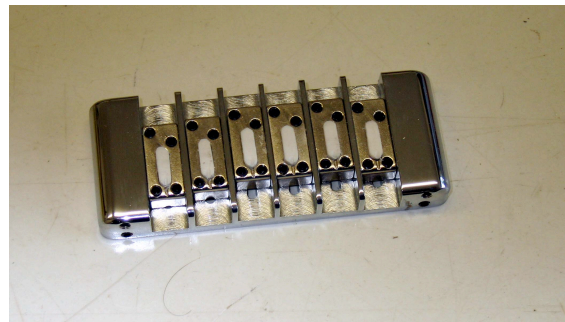
P: Conversion kit for Les Paul* or SG* type guitars

Remove strings and bridge. Measure the diameter of the existing studs. If they are 4 mm you can continue with the installation. If they are a different diameter the studs have to be replaced by adapters or other studs with 4 mm diameter. Then place the sitar bridge on the studs. According to the studs (there are right angled, tilted or left hand tilted studs) turn the bridge locking screws in the front and rear end of the bridge to fit the existing stud constellation so that the sitar bridge is right angled to the centre line of the guitar. Restring and tune to pitch. Adjust the string action coarsely by turning the thumb wheel screws of the studs. The further procedure is as explained above. After a successful installation tighten all locking screws and enjoy the new sound!

Piezo versions on request



sitar bridge S



sitar bridge P

*Stratocaster and Telecaster are trademarks of Fender Musical Instruments, USA

*Les Paul and SG are trademarks of Gibson Guitars, USA

Eyb Guitars · Günter Eyb · Schillerstr. 48 · 71229 Leonberg · Tel.: 07152-24385
Fax: 07152-24399 · Email: eyb-guitars@t-online.de · Internet : www.eyb-guitars.eu